



GATS Subscriber Group Meeting

Thursday, May 20, 2010

- Welcome and Introductions
- GATS Status Update
- Administrative Updates
- PJM EIS Website Upgrades
- Enhancements
- Subscriber Feedback
- State Updates
- Next Steps



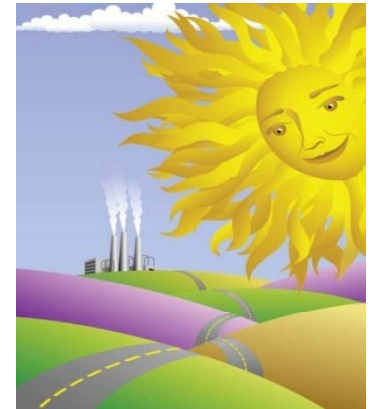
- Earth Day News Release on April 22, 2010
 - Distributed to PJM News, GATS Subscribers, and GATS State Agency distribution lists
 - Also posted to the GreenGridGirl Twitter page and was re-tweeted to others
- Main Highlights:
 - 4,000+ subscribers
 - 6,700+ renewable generators located in 17 states and the District of Columbia.
 - Decreased the rate that electricity suppliers pay to use GATS by 25 percent, from \$0.008/MWh to \$0.006/MWh
 - Fuel cells, such as the two facilities in New Jersey, are now tracked through GATS.
 - An on-line Bulletin Board was created to enable buyers and sellers to connect and make requests for certificates
 - In 2009, 107,888,407 Emission-Free Energy Certificates were produced
 - The amount of carbon dioxide emissions per megawatt-hour of generation in PJM has declined by 12 percent since 2005

Renewable Generators Registered by State

- ❖ DC – 76
- ❖ DE – 592
- ❖ IA – 2
- ❖ IL – 56
- ❖ IN – 39
- ❖ KY – 22
- ❖ MD – 584
- ❖ MI – 14
- ❖ MN – 1
- ❖ MO – 4
- ❖ NC – 33
- ❖ NJ – 4607
- ❖ NY – 5
- ❖ OH – 113
- ❖ PA – 774
- ❖ TN – 1
- ❖ VA – 226
- ❖ WV – 25

Solar Generators Registered by State

- ❖ DC – 76
- ❖ DE – 569
- ❖ IL – 3
- ❖ IN – 7
- ❖ KY – 21
- ❖ MD – 564
- ❖ MN – 1
- ❖ NC – 12
- ❖ NJ – 4552
- ❖ OH – 72
- ❖ PA – 643
- ❖ VA – 111
- ❖ WV – 7



Solar Facilities Registered in GATS

- 6676 solar facilities registered and certified in DE, DC, MD, NJ, OH and PA
- Total nameplate capability of 175,559.76kW
- 114,525 Solar REC's in GATS since 2005



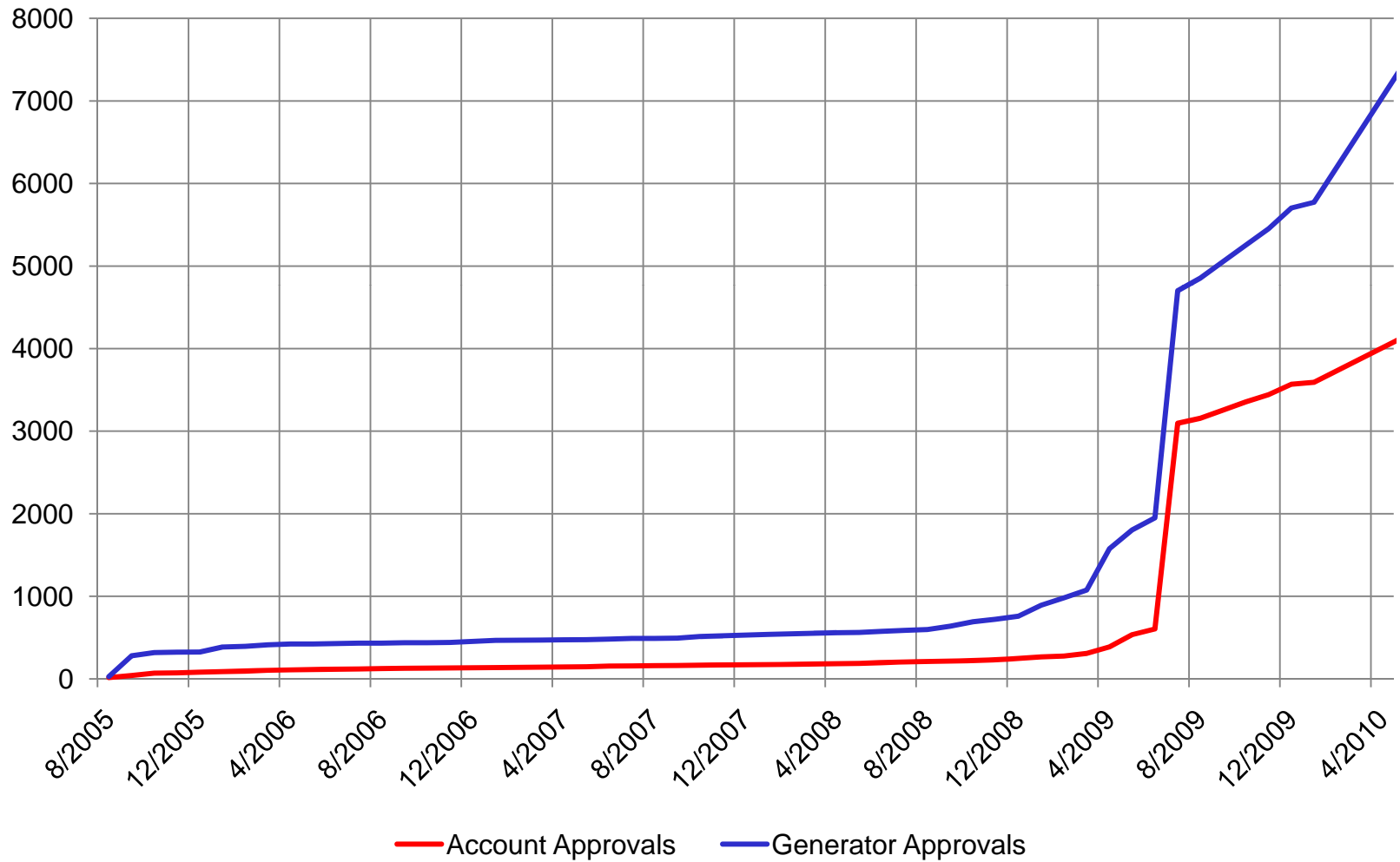
- ❖ 4118 SUBSCRIBERS
- ❖ 7174 REGISTERED RENEWABLE GENERATORS

CERTIFICATES CREATED

	Q1 2010	2009	2008
Class I (New Jersey)	3,017,651	7,862,892	5,770,160
Class II (New Jersey)	1,360,627	5,769,669	5,459,894
Tier I (Maryland)	2,118,643	7,828,627	7,093,636
Tier II (Maryland)	1,672,213	6,389,962	5,925,517
Tier I (District of Columbia)	1,048,367	4,119,547	4,236,620
Tier II (District of Columbia)	723,663	2,294,586	2,377,064
Tier I (Pennsylvania)	2,391,145	8,275,346	6,235,131
Tier II (Pennsylvania)	7,732,055	30,801,535	31,542,227
Eligible (Delaware)	152,432	580,007	572,198
New Eligible (Delaware)	1,611,891	4,579,255	2,996,043
Eligible (Illinois)	175,199	712,360	192,576
Renewable Energy Resource (Ohio)	1,223,782	3,215,443	771,424

	Q1 2010	2009	2008
Solar (New Jersey)	21,507	69,951	1,378
Solar (Maryland)	1,040	3,552	280
Solar (District of Columbia)	852	1,519	77
Solar (Pennsylvania)	2,610	8,482	2,247
Solar Eligible (Delaware)	872	3,575	1,202
Solar Renewable Energy Resource (Ohio)	257	4,299	214
Solar Photovoltaic Certificates	25,718	83,676	4,132

Accounts and Generators Approved in GATS

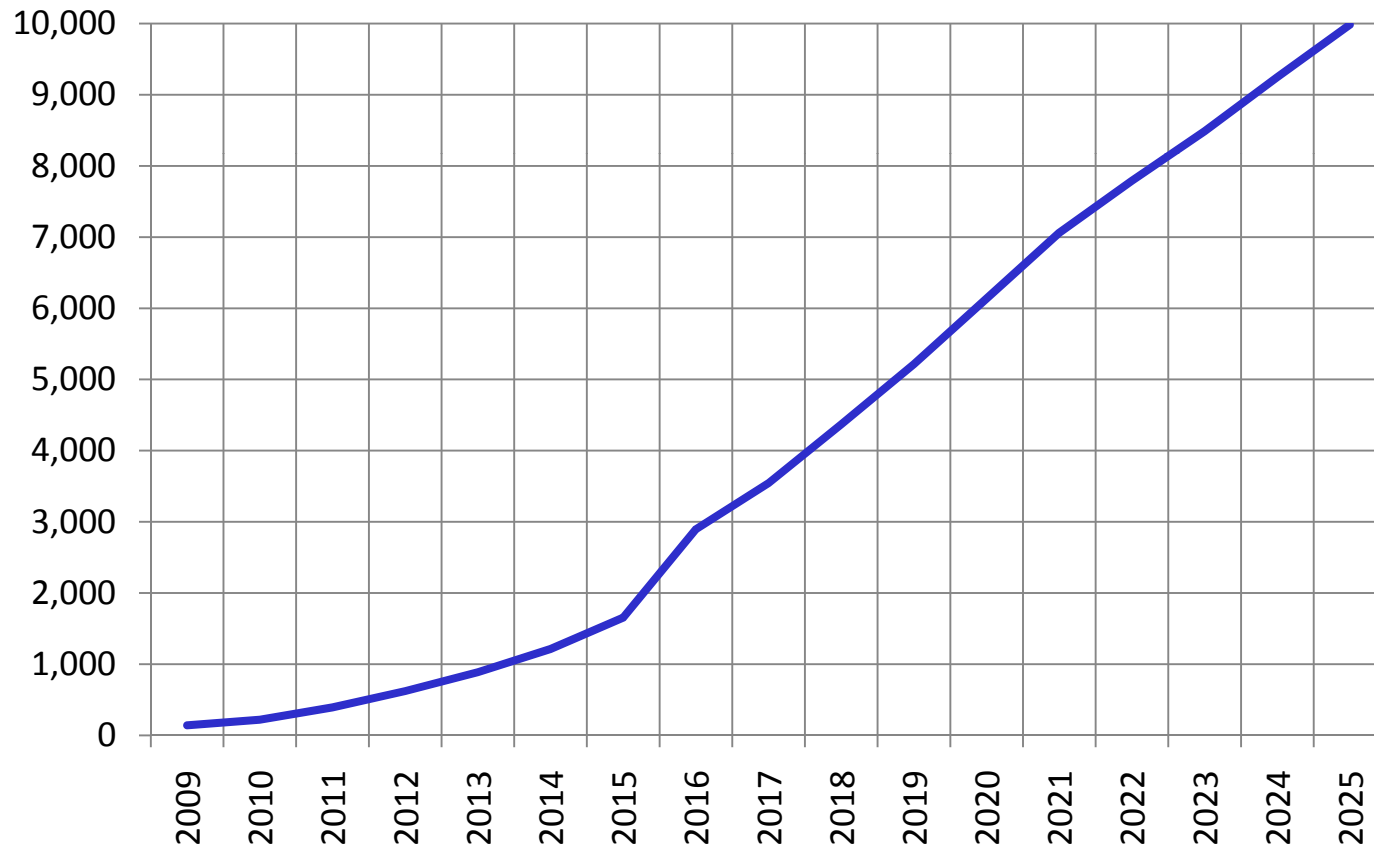


Projected Solar Requirements in PJM

Projected solar requirements in PJM due to state mandates:

- **6,000 MW** by 2020
- **10,000 MW** by 2025

Projected Solar Requirements in PJM (MW DC)



GATS Hotline Upgrade

- Increased Staff
- Automatic Call Distribution
- Toll Free Number: 1-877-750-GATS (4287)
 - Available June 1, 2010





- Generation Data Entry
 - Due to the increased volume of registered facilities all data must be entered into GATS by noon the day before certificate creation (rather than by midnight)
 - This change will allow the administrators time to review data and resolve issues without delaying the certificate creation process the next morning
 - This change will occur next month. Generation data for May will need to be entered by noon on June 29th
- Major System Change Form
 - Form will be required for the following changes to generators:
 - Change in System Ownership (signatures required by both parties involved)
 - Change in System Location
 - Change in System Characteristics such as system capacity or array information
 - Form will be posted on the PJM EIS Website (www.pjm-eis.com) in June



- New EIS web site implemented using updated technology
- Features that will be included are:
 - Improved navigation
 - GATS Login and Public Reports available directly from Website
 - Enhanced content
 - Getting Started tab to help new Subscribers learn about EIS / GATS
 - State Program Information – individual pages for each state using GATS
 - Updated Training Materials and Breeze Files
 - Advertising space available (rates still to be determined).
 - GATS subscribers interested in advertising on the PJM EIS web site can contact the GATS hotline to request more details.
- Launch is planned for early June 2010

[Call Us 886-886-8666](#)
[Latest News](#) | [Contact Us](#)
[Subscribe](#)



Search 

Getting Started
Events & Training
Program Information
Reports & News
Documents

Public Reports
Newsroom
Subscribe

Log Into GATS

User name:

Password:

[Forgot your password?](#)
[Register](#)

Lorem ipsum dolor sit amet, consectetur adipiscing elit. Mauris non nulla neque, in convallis magna. In hac habitasse platea dictumst. Sed in nunc felis, eget dictum metus. Quisque suscipit aliquam facilisis. Phasellus volutpat dapibus tortor bibendum sollicitudin. Vestibulum tempus consequat vehicula. Phasellus auctor velit ac nunc feugiat ac elementum massa

Praesent dignissim quam at erat mollis venenatis. Nam at lorem elit. Aenean euismod est nec quam mollis in aliquet tortor egestas. Donec ornare leo non massa posuere sit amet laoreet leo euismod. Phasellus et mi id purus euismod vulputate. Morbi ultrices suscipit libero, nec

Upcoming Events & Training

Event	Date	Time
Basic Training	4.30.10	9:00 - 11:30 a.m.
Advanced Training	4.30.10	9:00 - 11:30 a.m.
Basic Event	4.30.10	9:00 - 11:30 a.m.
Basic Training	4.30.10	9:00 - 11:30 a.m.


Key Dates	Date
Account Holder Review	4.30.10
Certificate Creation	4.30.10
MD Reports Due	4.30.10
Delaware Reports Due	4.30.10


AD

PJM-EIS © 2010, All rights reserved. | [Legal & Privacy](#)

[Log In](#) | [Contact Us](#) | [Latest News](#) | [Training](#) | [FAQs](#) | [Site Map](#)

[Call Us 886-886-8666](#)
[Latest News](#) | [Contact Us](#)
[Subscribe](#)




Search 

Getting Started
Events & Training
Program Information
Reports & News
Documents

[About GATS](#)
[Frequently Asked Questions](#)
[How do I sell RECs?](#)
[Who's Who?](#)
[Contact Us](#)

About GATS

Lorem ipsum dolor sit amet, consectetur adipiscing elit. Mauris non nulla neque, in convallis magna. In hac habitasse platea dictumst. Sed in nunc felis, eget dictum metus. Quisque suscipit aliquam facilisis. Phasellus volutpat dapibus tortor bibendum sollicitudin. Vestibulum tempus consequat vehicula.



Log Into GATS

User name:

Password:

[Forgot your password?](#)
[Register](#)

AD

Vision

Phasellus auctor velit ac nunc feugiat ac elementum massa Praesent dignissim quam at erat mollis venenatis. Nam at lorem elit. Aenean euismod est nec quam mollis in aliquet tortor egestas. Donec ornare leo non massa posuere sit amet laoreet leo euismod. Phasellus et mi id purus euismod vulputate. Morbi ultrices suscipit libero, nec cursus odio sodales at. Sed accumsan nisl eu dui rutrum sit amet aliquam risus gravida. Mauris ullamcorper luctus fermentum. In dictum turpis eget ipsum auctor eget vulputate augue dictum.

Mission

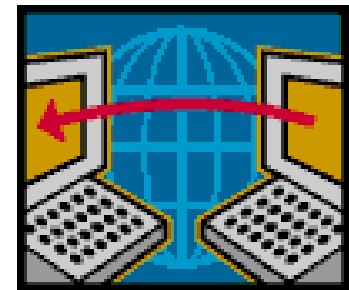
Donec id neque eu nibh aliquet ornare. Etiam fringilla, nulla porttitor faucibus vehicula, turpis est venenatis turpis, rhoncus commodo eros diam ac tellus. Quisque quis risus a nulla accumsan luctus sit amet ac nibh. Pellentesque tortor lorem, placerat id consectetur pretium, ultrices eu dolor. Morbi eget nisi tellus, vel lobortis ligula. Nam facilisis eleifend felis, id luctus nulla hendrerit sit amet. In sed tellus

PJM-EIS © 2010, All rights reserved. | [Legal & Privacy](#)
[Log In](#) | [Contact Us](#) | [Latest News](#) | [Training](#) | [FAQs](#) | [Site Map](#)

- Recent Enhancements
 - GATS now fully compatible with Firefox and Safari
 - PJM Residual Mix Report Update
 - Certificate Creation Date was added
 - Updated reports for billing purposes
 - Bulletin Board Price is now updateable
 - Remove the Register Import Generator Link
 - Search Capability added to the GATS Registered Renewable Generator Report
 - Added Unit Id to CEPS and Active Subaccount Reports
 - MISO Data Uploads
 - GATS Admin Meter Reading Override
 - ★ New Solar Registration Screen (PV and Thermal)
 - ★ New Bulletin Board for Certificate Buyers
 - Certificates Inbox additions
 - My RPS Compliance Report Updates (State Agency Version)
 - ★ New State Agency Reports
 - RPS-Eligible Certificate Status Report
 - Certificates Retired for RPS Compliance Report
 - GATS Generators Public Report Update

Market Platform Interface

- PJM EIS is developing software to enable connections between GATS and external market platforms, such as an auction or exchange.
- There are four key components to the software:
 1. Establish Account Associations – users can establish an association between their account in GATS and one or more external market platforms.
 2. Create Market Subaccount in GATS – after an association is established, a Market Subaccount will appear in GATS. Certificates transferred into the subaccount will be displayed to the user in the associated market platform.
 3. Enable / Disable Transfers - transfers into or out of the Market Subaccount can be enabled or disabled by the corresponding external market platform.
 4. Transfer Cleared Certificates – External market platform vendor can send results to GATS to automatically transfer certificates from seller to buyer.



Market Platform Interface (continued)

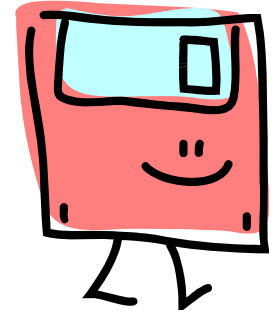
- GATS users will see no change in GATS unless they have requested an association between their account in GATS and an external market platform.
- There is no fee to GATS users who elect to create an association.
- External market platforms will be charged a fixed annual fee (still to be determined).
- Interested external market platform vendors can contact the GATS hotline to request more details about the interface and terms and conditions for receiving this service.

Third Party Reporting

- Background:
 - To qualify for NJ RECs, NJ BPU rules require renewable energy generators to be 1) interconnected with an electric distribution system that supplies New Jersey, or 2) the sale of renewable energy must be settled in the PJM wholesale power market.
 - Board Order dated 1/31/2008 waived the requirement to be settled in the PJM wholesale power market and allowed attestations to be used temporarily.
 - Board Order dated 5/13/2009 extended the waiver, which now expires on 5/31/2010.
 - RPS rule amendments effective 1/4/2010 provided a new option allowing a PJM EDC to report generation data to PJM EIS on behalf of the generating facility. Electric generation qualifies for issuance of RECs if:
 - “The generating facility reports its generation electronically no less frequently than monthly to an electric distribution company that is a member of PJM, via a meter that satisfies all requirements of American National Standards Institute (ANSI) “Electric Meters Code for Electricity Metering,” C12.1-2008 (as amended or supplemented), and complies with any additional requirements established by PJM, and that electric distribution company then provides the generator’s report electronically no less frequently than monthly to PJM-EIS”

Third Party Reporting (continued)

- Third Party Reporting is being developed to allow Electric Distribution Companies or Monitoring Companies to report generation data for their customers
- The use of this reporting will ensure more accurate reporting to the GATS System
- Functionality will be implemented using web services with XML
- The user will select a 3rd party to load their generation from a dropdown. They will not be able to change this if they have any unprocessed generation associated with the generator.
- Once a user selects the option to have their generation loaded by a 3rd party they will not be able to enter the data themselves nor will they be able to modify it after it's been loaded.
- PJM EIS will provide the 3rd party a token to identify them to our system and they will have to provide to us the IP addresses they will be using in their requests. We will only accept data from a vendor/IP combination stored in our system.
- 3rd parties will provide a Account ID, unit id, previous meter read, current meter read, net generation and month/year
- The generation will be aggregated monthly. 3rd parties can send multiple months of generation for a single generator at one time and multiple generators
- For solar the data must be kWh whole numbers. For non-solar the data must be loaded in whole MWh increments.



Third Party Reporting (continued)

- Normal generation validations will be checked. The validations are
 - The account ID owns the unit.
 - The unit is identified as being allowed to receive data from that 3rd party.
 - The generation is reasonable. For solar we'll use production estimates. For non-solar we will base the reasonability check on the capacity times the number of hours in the month.
 - GATS will only accept the data once per month per generator. The 3rd party could load a different generator everyday.
- GATS will load records that passed validation and return error codes to the 3rd party for records that didn't.
- 3rd party data load can be loaded the first three weeks of the month. No data will be loaded the week of certificate creation to allow time for subscribers to review the data.
- The 3rd party must have a GATS account. The 3rd party accounts will be able to view the generation they loaded and any error messages on a report in their account.
- The Interface Control Document will be available shortly. Requests for the ICD should be directed to the GATS Hotline.
- Third Party Reporting functionality will be available at the end of June.

GATS Subscriber Feedback and State Updates



- Review any Action Items
- Timeline for next Meeting

